



## Scheda tecnica indumento/Garment technical data sheet.04529B.00



Identificazione articolo/Item identification					
Cod. comm.le Industrial Starter/ IS commercial item code:	<b>04529B</b>	Cod. art. fornitore/ Supplier item code*:	<b>DK3462-1</b>	Cod. fornitore/ Supplier code:	<b>000535</b>
Cod. colore Industrial Starter/ Industrial Starter colour code:	<b>060</b> (nero/black)	<input checked="" type="checkbox"/> [X]	Articolo del catalogo/Item from catalogue		
		<input type="checkbox"/> [ ]	Articolo personalizzato/Customized item		
		Codice cliente/Customer code:		<b>N/A</b>	
Nome articolo/Item name:	<b>Giubbino softshell stretch "SPRINGER" / "SPRINGER" stretch softshell jacket</b>				

Descrizione tecnica dell'articolo/Technical item description			
	Composizione/ Fabric composition	Colore/colour (Pantone)	Peso del tessuto/ Fabric weight [g/m <sup>2</sup> ]
Tessuto esterno / Outer shell :	<b>83% nylon 17% spandex / 83% nylon 17% spandex</b>	<b>Nero / Black</b>	<b>340 +/- 5%</b>
Fodera / Lining	<b>100% poliestere mesh/ 100% mesh polyester</b>	<b>Nero / Black</b>	<b>140 +/- 5%</b>
Accessori/Accessories:	<b>n. 3 tasche frontali, n. 2 tasconi interni / n. 3 outer pockets , n. 2 inner pockets</b>		
Loghi e ricami/ Logos & embroideries:			
Taglie/Sizes:	<b>S, M, L, XL, XXL, XXXL</b>		
Imballo/Packages:	<b>n. 1 pz per paper box – n. 10 pz per cartone / n. 1 piece per paper box - n. 10 pcs per export carton</b>		
Istruzioni lavaggio/ Care label:			

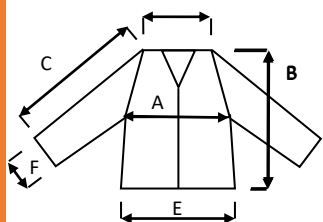
Conformità alle norme CE/Conformity with EC standards		
Cat.DPI/ PPE Category:	<b>I</b>	Norme CE e livelli di protezione/ EC standards and protection levels: <b>EN ISO 13688:2013</b> <b>( Rif . Test Report RdP no: 19RT01115 by RITEX *)</b> <b>*Accredia Lab n. 0315 L</b>
Lingue nota Informativa/ Manufacturer's notes languages:	<b>IT,ES,CZ,PL,EN,PT,SK,HU,FR,DE,LT,RS,GR,SI,LV,HR,EE,TR,RO</b>	

	Misure delle taglie/Size measurements [cm]					
	S	M	L	XL	XXL	XXXL
A. Torace / Chest:	<b>104</b>	<b>110</b>	<b>116</b>	<b>122</b>	<b>128</b>	<b>134</b>
B. Lunghezza tot. / Tot. lenght:	<b>66</b>	<b>68</b>	<b>70</b>	<b>72</b>	<b>74</b>	<b>76</b>
C. Manica / Sleeve :	<b>83</b>	<b>84,5</b>	<b>86</b>	<b>87,5</b>	<b>89</b>	<b>90,5</b>
E. Fondo / Bottom:	<b>48</b>	<b>51</b>	<b>54</b>	<b>57</b>	<b>60</b>	<b>63</b>
F. Polsino / Sleeve opening :	<b>9</b>	<b>10</b>	<b>10</b>	<b>10</b>	<b>11</b>	<b>11</b>

## Scheda tecnica indumento/Garment technical data sheet.04529B.00



### Disegno e foto/Drawing and photo



04529D "SPRINGER" al "CUBO" / 04529D "SPRINGER" "CUBE"



n. 12 box assortiti / n. 12 assorted boxes : S/1, M/2, L/3, XL/3, XXL/2, 3XL/1

Altavilla Vic.na (Vi), 10/05/2021